

SUBSEA INDUSTRIES



Underwater Cleaning Equipment

In harsh underwater environments it is essential to have sturdy and reliable equipment. The unique design of our underwater cleaning machines provides the efficiency and durability required in such conditions. All our systems are carefully designed with operational safety as a prime consideration. A range of systems is available for various applications. All our cleaning units are offered separately or supplied with a complete support system including umbilical, tools and hydraulic power unit.

MC111

The MC111 is our smallest model specially designed for cleaning and polishing ship hulls, propellers and thrusters. The MC111 is very handy and can be easily taken into difficult corners and niches while still obtaining the desired results.

Specifications:

- Dimensions:
 - Length: 300 mm
 - Width: 180 mm
 - Height: 60 mm
- Weight: 5 kg
- Hydraulic requirement: 20ltr/min @ 140 bar



MC131

The MC131 is a compact unit designed for cleaning all kinds of marine fouling from yachts and smaller ships to offshore oil & gas platforms. The brush rotation speed is adjustable by the diver so as to achieve an optimum hourly cleaning rate.

Specifications:

- Dimension:
 - Machine diameter: 235 mm
 - Brush diameter: 300 mm
- Weight in air: 9 kg
- Weight in seawater: 1 kg
- Cleaning rate: 300 m²/hour
- Depth rating: 70 m
- Hydraulic requirement: 20ltr/min @ 140 bar



MC212

The MC212 has an enviable track record, with over 20 years of service. It is the most efficient cleaning machine currently available and is highly regarded by the industry internationally. The MC212 is designed for cleaning light, medium and heavy marine fouling from ship hulls, offshore oil & gas platforms (concrete or steel), jetties, piles, intakes and internal pipelines. The equipment has a self-balancing feature, which allows the operator to use the tool safely and effortlessly for long periods.

Specifications:

- Dimensions:
 - Length: 450 mm
 - Width: 800 mm
 - Height: 250 mm
- Weight in air: 23kg
- Weight in seawater: 1 kg buoyant
- Cleaning rate: 450 m²/hour
- Depth rating: 70 m
- Hydraulic requirement: 40ltr/min @ 140 bar



MC313

The unique patented design of the MC313 underwater hull cleaning unit will stand up to the most difficult underwater cleaning conditions encountered on various types of ships. The downward pressure of the brushes can easily be adjusted throughout the operation and the heads are self-adjusting to the contours of the hull. This, coupled with a powerful four-wheel drive system, are major technological breakthroughs in subsea cleaning.

Different types of fouling can be treated with the appropriate pressure and tools. The MC313 has a very efficient cleaning record. It is designed for larger ship hulls or other large, reasonably flat surfaces.

Specifications:

- Dimensions:
 - Length: 1240 mm
 - Width: 1040 mm
 - Height: 450 mm
- Weight in air: 133kg
- Weight in seawater: 10 kg buoyant
- Cleaning rate: 1500 m²/hour
- Depth rating: 70 m
- Hydraulic requirement: 80ltr/min @ 140 bar



PP018 Hydraulic power unit

The PP018 hydraulic power unit is proficient for running our one and two brush units. It is an efficient and reliable power unit that is easy to handle and transport. Suitable for running MC111 / MC131 / MC212.

Oil flow	20 l.p.m. at 1800 r.p.m. 40 l.p.m. at 3600 r.p.m.
Working pressure nominal	140 bar
Engine	Vanguard 2-cylinder 18 HP (13,4 KW) 4 stroke petrol
Dimensions (LxWxH)	805x625x695 mm
Weight	105 kg



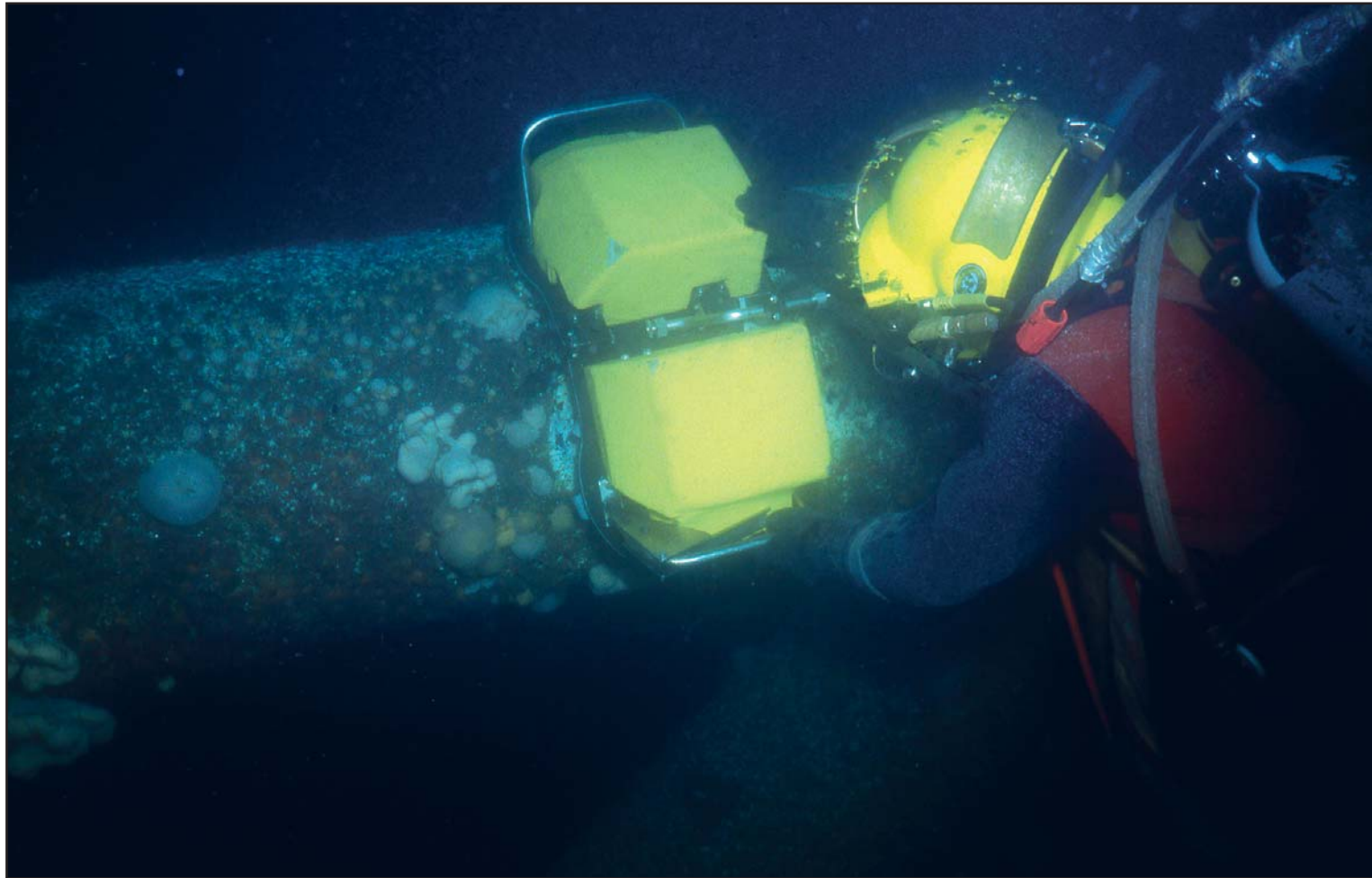
PP100 Hydraulic power unit

The PP100 hydraulic power unit is proficient for running all our units.

Suitable for running MC111 / MC131 / MC212 / MC313.

Oil flow	20 l.p.m. - 80 l.p.m.
Working pressure nominal	140 – 160 bar
Engine	Kubota 4-cylinder 104 HP (78 KW) Diesel
Dimensions (LxWxH)	1600x1000x1720 mm
Weight	1400 kg





SURSEA INDUSTRIES

Phone: +32 3 213 53 00 • Fax: +32 3 213 53 21

Haven 29, B-2030 Antwerpen, Belgium

Email: info@subind.net

www.subind.net